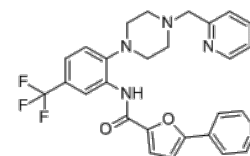


Product Name : SPHINX31
Cat. No. : PC-35908
CAS No. : 1818389-84-2
Molecular Formula : C₂₇H₂₄F₃N₅O₂
Molecular Weight : 507.517
Target : SRPK
Solubility : 10 mM in DMSO



Biological Activity

SPHINX31 (SPHINX 31) is a potent, selective, ATP competitive inhibitor of Serine/arginine-protein kinase 1 (**SRPK1**) with IC₅₀ of 5.9 nM.

SPHINX31 displays no significant activity against other splicing modulating kinases (CLK family, DYRK1A and DYRK2, DYRK5, SRPK-2/3, PIM1, PIM2 kinases).

SPHINX31 inhibits SRPK1 mediated SRSF1 phosphorylation in PC3 prostate cancer cells with EC₅₀ of 360 nM, dose-dependently switches splicing from VEGF-A165a to VEGF-A165b in RPE cells.

SPHINX31 potently inhibits blood vessel growth in models of choroidal angiogenesis in vivo.

References

Batson J, et al. *ACS Chem Biol.* 2017 Mar 17;12(3):825-832.

Tzelepis K, et al. *Nat Commun.* 2018 Dec 19;9(1):5378.

Caution: Product has not been fully validated for medical applications. Lab Use Only!

E-mail: tech@probechem.com